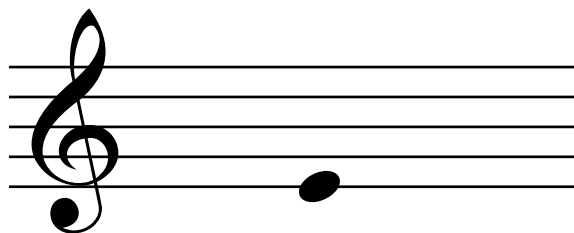


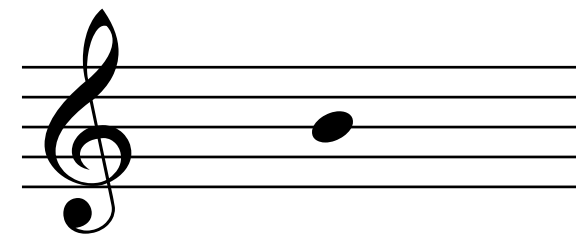
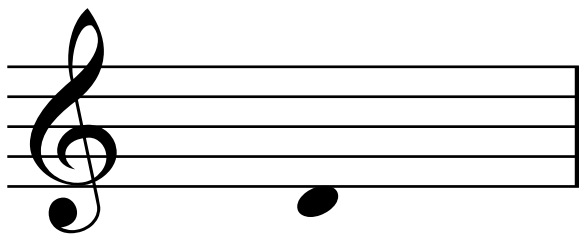
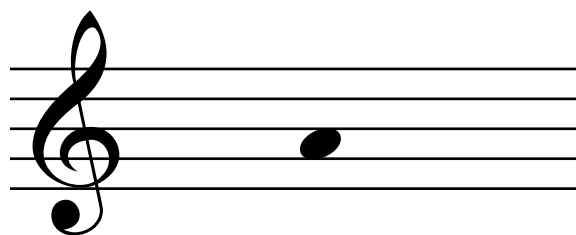
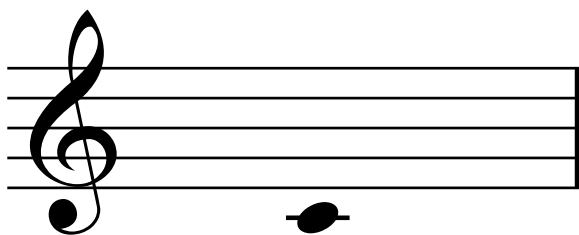
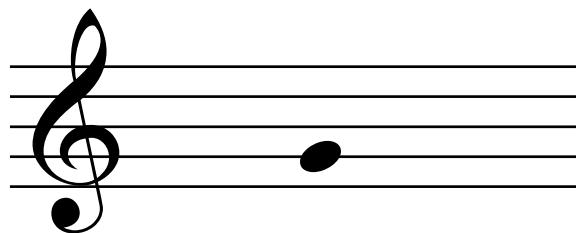
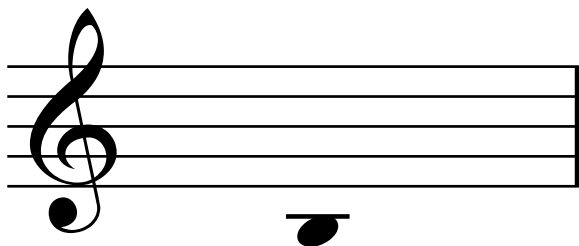
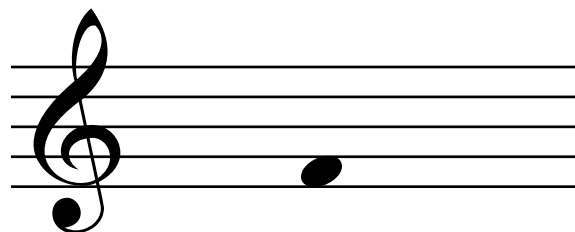
Print double-sided, preferably on heavy-weight paper or cardstock.

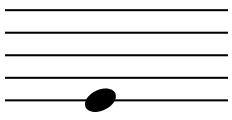
Make sure to select “actual size” rather than “print to fit” in your printer options.



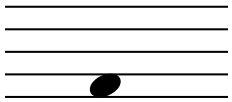
The back of the card includes alphabetic note names and the physical fingering on violin.

Start out with just open strings. Then move to notes on a single string, or two strings. Gradually expand until all notes are used.





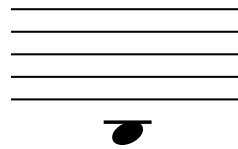
E
d1



F
d2



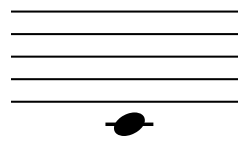
G
d3



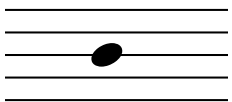
B
g2



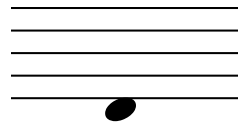
A
open a



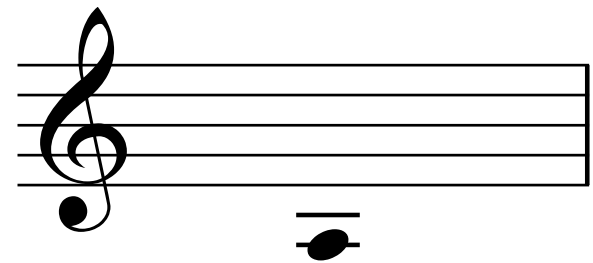
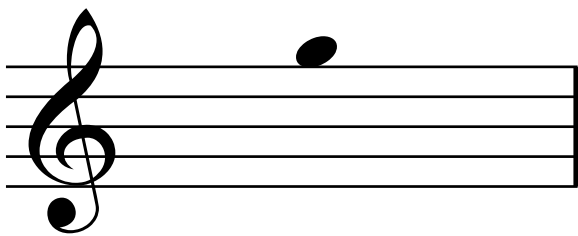
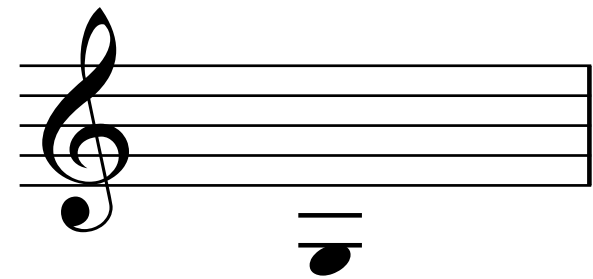
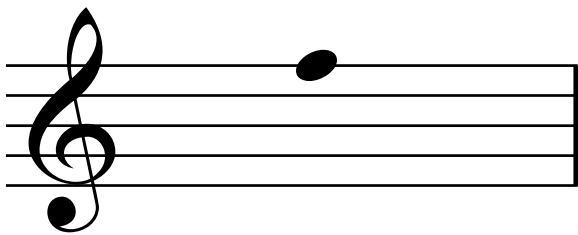
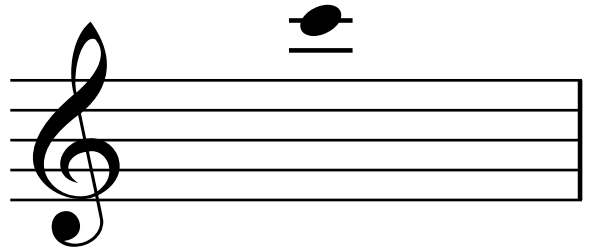
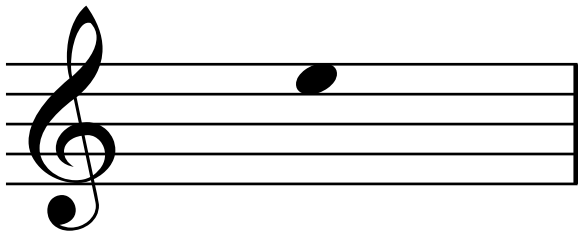
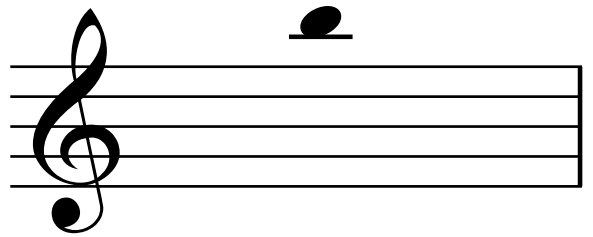
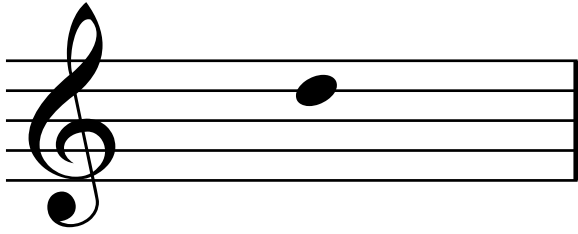
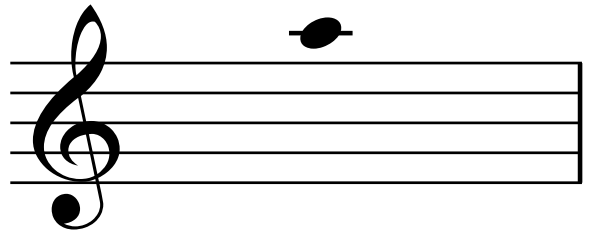
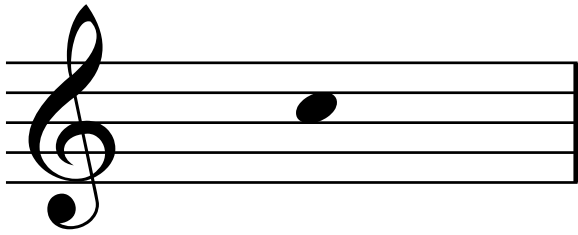
C
g3

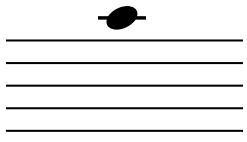


B
a1



D
open d

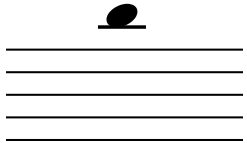




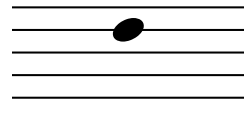
A
e3



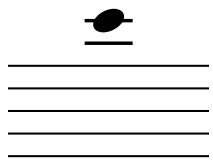
C
a2



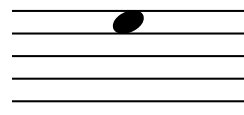
B
e4



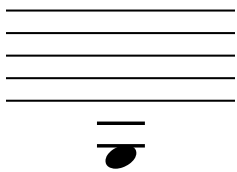
D
a3



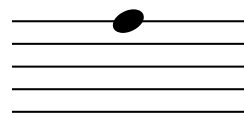
C
*extended 4th
finger on e*



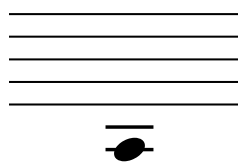
E
open e



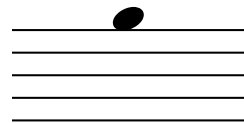
G
open G



F
e1



A
g1



G
e2